



Flight Plan & Site Survey

Created using **RPAS Wilco**[®]

Reference No:	6BCF51
Title:	PERCFC
Pilot Name:	
Pilot Certificate:	
Flight Start:	July 10, 2024 9:39 AM
Flight End:	July 10, 2024 11:39 AM
Flight Area (Latitude):	43° 57' 47.20" N (43.963)
Flight Area (Longitude):	77° 6' 46.60" W (-77.113)
Altitude - Radius:	Alt: 400 ft - Rad: 926.0 m (0.5 nm)
Classification:	UNCONTROLLED
FIR - Contact:	CZYZ - 506-867-8311

Please ensure you received all required authorizations prior to flight.

Disclaimer

This Site Survey was created using RPAS Wilco by AIM Robotics. The flight plan contained is intended only for RPAS flights on the date/time and location specified. The user accepts all responsibility for the accuracy and completeness of the information contained.

For the complete Terms & Conditions, see

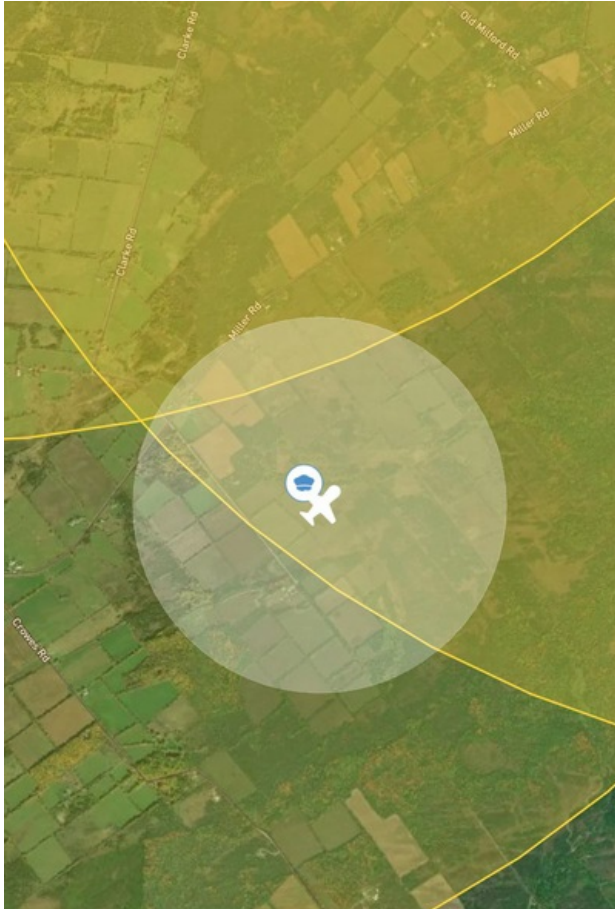
<https://rpaswilco.com/#/tnc>

Included

- Site Survey
- Obstacles (if available)
- Nearby Aerodromes
- Canadian Aviation Regulations
- GFA
- Aerodrome Supplements
 - METAR & TAF (if available)
 - NOTAMS
 - CFS





Flight Map



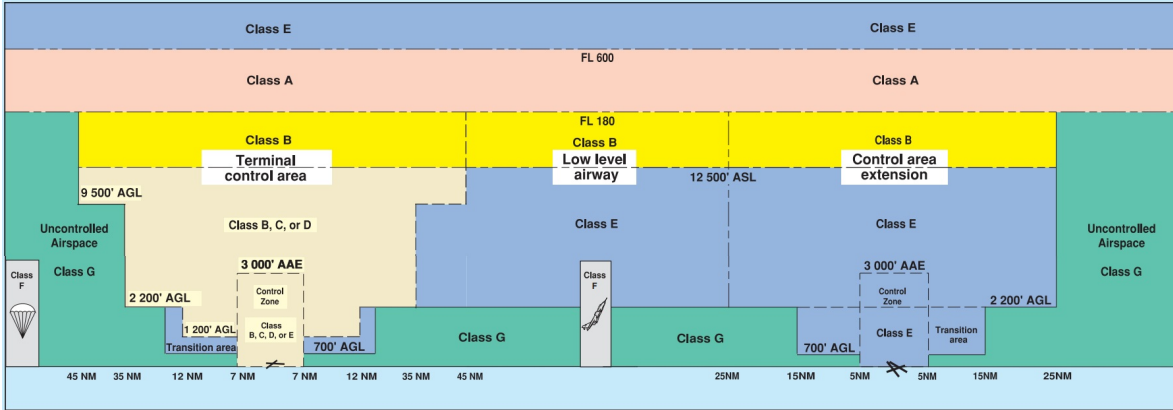
RPAS Specification

- **Manufacturer:**
MAAC
- **Model:**
MODELAIRPLANE
- **Registration Number:**
- **Eligible for advanced operations:**
Yes
- **Manufacturer RPAS safety assurance:**
 - **Controlled Airspace:** YES
 - **Near People:** NO
 - **Over People:** NO

MAP Details

	Latitude	Longitude
 MODEL	43° 57' 47.20" N (43.963)	77° 6' 46.60" W (-77.113)
 Pilot	43° 57' 50.80" N (43.9641)	77° 6' 50.20" W (-77.1139)

Airspace Classification



Overlying Airspaces

Class	Name	Floor	Ceiling
E	Trenton, ON TCA	700AGL	17000MSL
E	Trenton, ON TCA	700AGL	12500MSL
B	Trenton, ON TCA	12500MSL	17000MSL
B	Southern Ontario Low Level Control Area CAE	17000MSL	18000MSL

Nearest Aerodromes & Distance from Operation

PICTON (CNT7 - AERODROME - Reg)	Lat: 43.989	Long: -77.139	3.554KM	1.92NM	NW
PICTON (GREENBUSH) (CGB3 - AERODROME - Reg)	Lat: 44.001	Long: -77.073	5.288KM	2.86NM	NE
PICTON (PRINCE EDWARD COUNTY HOSP) (CPE7 - HELIPORT - Cert)	Lat: 44.016	Long: -77.138	6.213KM	3.35NM	N
MOUNTAIN VIEW (CPZ3 - AERODROME - Mil)	Lat: 44.07	Long: -77.339	21.634KM	11.68NM	NW
TYENDINAGA (MOHAWK) (CPU6 - AERODROME - Reg)	Lat: 44.185	Long: -77.108	24.676KM	13.32NM	N

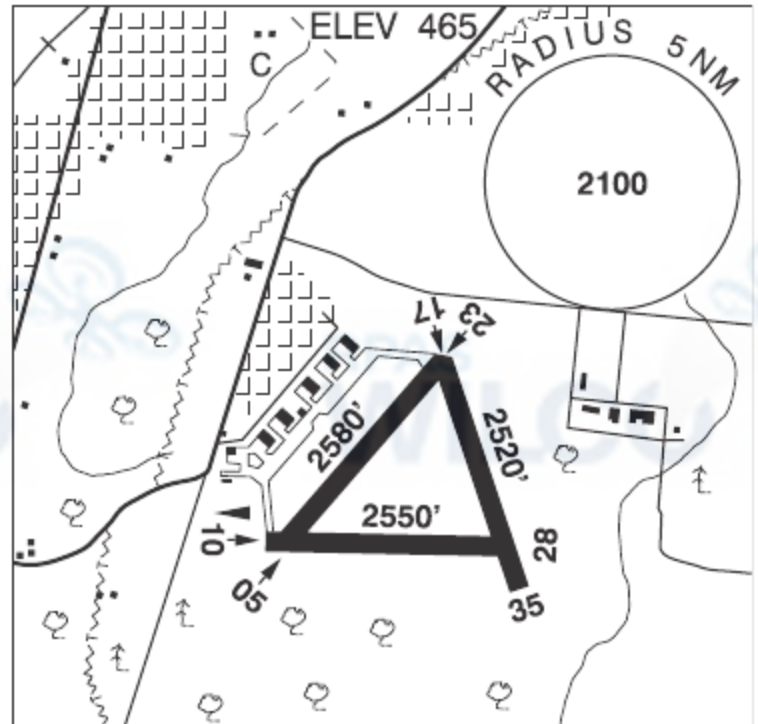
ONTARIO

AERODROME/FACILITY DIRECTORY

PICTON ON

CNT7

REF	N43 59 21 W77 08 21 Adj SE 12°W UTC-5(4) Elev 465' A5000
OPR	Loch Sloy Holdings Ltd. 613-476-3064 Reg PPR
PF	C-1,2,3,4,5,6
FLT PLN	FIC London 866-WXBRIEF (Toll free within Canada) or 866-541-4104 (Toll free within Canada & USA)
RWY DATA	Rwy 05/23 2580x150 ASPH Rwy 10/28 2550x150 ASPH Rwy 17/35 2520x150 ASPH
RCR	Opr No win maint
COMM	ATF tfc 123.2 5NM 3500 ASL
CAUTION	Extv glider activity 4NM radius to 3500 ASL mid Jun-Aug 31, dly.



ONTARIO

AERODROME/FACILITY DIRECTORY

PICTON (GREENBUSH) ON

CGB3

REF	N44 00 04 W77 04 24 2.87 ESE 12°W (2014) UTC-5(4) Elev 460' A5000	
OPR	Jeff Douglass 613-885-6917 Reg PPR	
PF	B-1 C-2,3,4,5 D-6	
FLT PLN		
FIC	London 866-WXBRIEF (Toll free within Canada) or 866-541-4104 (Toll free within Canada & USA) or 519-452-4040	
SERVICES		
FUEL	MOGAS PN Opr	
RWY DATA	Rwy 05(049°)/23(229°) 1500x60 GRASS	
RCR	Opr No win maint. Rwy soft in spring.	
COMM		
ATF	tfc 123.2 5NM 3500 ASL	
CAUTION	Runway slopes down Thld 23. Rwy narrows at mid-field to 50' to cross seasonal drainage ditch. Treeline nearest to hangar may cause mechanical turbulence. Extv glider activity at CNT7 mid-Jun to mid-Aug.	

ONTARIO

AERODROME/FACILITY DIRECTORY

PICTON (PRINCE EDWARD COUNTY HOSP) ON (Heli)

CPE7

REF	N44 00 59 W77 08 17 Adj 12°W (2012) UTC-5(4) Elev 353' A5000	
OPR	Quinte Health Care 613-969-7400 Cert	
PF	C-1,2,3,4,5,6	
FLT PLN		
FIC	London 866-WXBRIEF (Toll free within Canada) or 866-541-4104 (Toll free within Canada & USA)	
HELI DATA	FATO/TLOF 82' dia CONC/ASPH Safety Area 110' x 110' Max heli overall length 54.6'	
RCR	Opr	
LIGHTING	RY(LO) RF(FL&FH)	
COMM		
ATF	tfc 123.2 5NM 3400ASL	
PRO	Arr/dep btwn 295°-360° & 045°-090° fr heli, slope 8% (H3), day/night use.	

ONTARIO

AERODROME/FACILITY DIRECTORY

TRENTON / MOUNTAIN VIEW ON

CPZ3

REF	N44 04 12 W77 20 22 5.2SE 12°W (2022) UTC-5(4) Elev 362' A5000 LO6 LO7 HI5	
OPR	DND – Mil Use Only. 24 hr PPR through Trenton Ops 613-965-3316, CSN 319-827-3316 Fax 613-965-7093. Regardless of PPR all users check in with Wg Ops via phone or radio 122.35, 268.0 prior to using Mountain View aprt.	
PF	B-1 D-2,3,5	
FLT PLN	FIC London 866-WXBRIEF (Toll free within Canada) or 866-541-4104 (Toll free within Canada & USA) (Note: Wg Ops/ATC will not accept telephone/air filing).	
SERVICES	MIL ADV Trenton 268.0 or 122.35 20 min prior to ldg	
RWY DATA	Rwy 06R(059°)/24L(239°) 4973x90 ASPH usable (with unstressed 15ft asphalt either side) Rwy 06L(060°)/24R(240°) 4797X60 GRVL Rwy 16(158°)/34(338°) 3004X150 crushed CONC/ASPH RCR Opr Rwy 06R/24L TT585, PCN 86/F/A/X/T. Ltd sked win maint. Rwy 16/34 - sfc rough, no maint, use with caution	
LIGHTING	Rwy 06R/24L, 06L/24R AMP3 marker panels avbl. Overt/covert AMP3 lgt avbl Rwy 06R/24L ARCAL 122.925 and Rwy 06L/24R ARCAL 123.3, both type J; overt lgt avbl min 3 days PNR; overt lgt avbl min 3 days PNR	
COMM	ATF tfc 122.925 4NM 2500 ASL Area underlies the SE quadrant of the CYTR Mil CZ. Acft to contact Trenton Twr on 128.7 prior to entering the Mountain View ATF area.	
PRO	Rwy 06R/24L Medium and Heavy acft shall only turn around on the first 300ft of each end of the rwy. Acft on apch for Rwy 24L & 24R must maintain 3° GP due to hwy, if less than 3° initiate go around before overflight of hwy exc Gliders and tow acft. Increased mil tfc within 35NM of CYTR. Pilots are advised to listen to CYTR ATIS (135.45) prior to contacting CYTR Twr for entry into ATF area. Extensive paradrop & glider activity at Trenton (CYTR) & Mountain View to 3500 ASL, ocsl to 12,500 ASL. Timing and alt will be bcst on ATIS. Non-std circuit pro for mil acft. All users external to 8 Wing intending to conduct training at Mountain View must request permission and a procedures briefing. Request permission from 8 Wing Ops at 613-392-2811 ext 4560/2559/2766 a minimum of 24 hours in advance.	
CAUTION	Possible NORDO vehicles on rwy/twy, verify rwy unobstructed prior to ldg.	

ONTARIO

AERODROME/FACILITY DIRECTORY

TYENDINAGA (MOHAWK) ON

CPU6

REF	N44 11 05 W77 06 28 3SW 13°W UTC-5(4) Elev 260' A5000	
OPR	First Nations Technical Institute Flt Ops 613-885-1340 Mon-Fri 13-20Z† exc hols Reg	
PF	B-1 Mon-Fri 13-20Z† exc hols C-2,5 D-3,4,6	
FLT PLN		
FIC	London 866-WXBRIEF (Toll free within Canada) or 866-541-4104 (Toll free within Canada & USA)	
RWY DATA	Rwy 09/27 4270x144 ASPH Thld 09 displ 390'. Rwy 15/33 2575x144 ASPH Thld 15 displ 150'.	
RCR	Opr Ltd win maint	
LIGHTING	09-(LO non-std, May-Nov), 27-(LO non-std, May-Nov)	
COMM		
ATF	Mohawk UNICOM ltd hrs O/T tfc 123.5 5NM 3300 ASL	
PRO	All mil aircrew are rstd fr conducting tng flt at CPU6 unless prior perms has been obtained fr opr.	
CAUTION	Extv bird activity Apr-Oct. Possibility of NORDO maint equip on rwys. Extv flt tng activity on and within 20NM of A/D.	

Canadian Aviation Regulations

Division III — General Operating and Flight Rules

For full listing please visit : <https://laws-lois.justice.gc.ca/eng/regulations/SOR-96-433/FullText.html#s-901.27>

Visual Line-of-sight

- **901.11 (1)** Subject to subsection (2), no pilot shall operate a remotely piloted aircraft system unless the pilot or a visual observer has the aircraft in visual line-of-sight at all times during flight.
- **(2)** A pilot may operate a remotely piloted aircraft system without the pilot or a visual observer having the aircraft in visual line-of-sight if the operation is conducted in accordance with a special flight operations certificate — RPAS issued under section 903.03.

Procedures

- **901.23 (1)** No pilot shall operate a remotely piloted aircraft system unless the following procedures are established:
 - **(a)** normal operating procedures, including pre-flight, take-off, launch, approach, landing and recovery procedures; and
 - **(b)** emergency procedures, including with respect to
 - **(i)** a control station failure,
 - **(ii)** an equipment failure,
 - **(iii)** a failure of the remotely piloted aircraft,
 - **(iv)** a loss of the command and control link,
 - **(v)** a fly-away, and
 - **(vi)** flight termination.
- **(2)** If the manufacturer of the remotely piloted aircraft system provides instructions with respect to the topics referred to in paragraphs (1)(a) and (b), the procedures established under subsection (1) shall reflect those instructions.
- **(3)** No pilot shall conduct the take-off or launch of a remotely piloted aircraft unless the procedures referred to in subsection (1) are reviewed before the flight by, and are immediately available to, each crew member.
- **(4)** No pilot shall operate a remotely piloted aircraft system unless the operation is conducted in accordance with the procedures referred to in subsection (1).

Site Survey

901.27 No pilot shall operate a remotely piloted aircraft system unless, before commencing operations, they determine that the site for take-off, launch, landing or recovery is suitable for the proposed operation by conducting a site survey that takes into account the following factors:

- **(a)** the boundaries of the area of operation;
- **(b)** the type of airspace and the applicable regulatory requirements;
- **(c)** the altitudes and routes to be used on the approach to and departure from the area of operation;
- **(d)** the proximity of manned aircraft operations;
- **(e)** the proximity of aerodromes, airports and heliports;
- **(f)** the location and height of obstacles, including wires, masts, buildings, cell phone towers and wind turbines;
- **(g)** the predominant weather and environmental conditions for the area of operation; and
- **(h)** the horizontal distances from persons not involved in the operation.

Operations at or in the Vicinity of an Aerodrome, Airport or Heliport

- **901.47 (1)** No pilot shall operate a remotely piloted aircraft at or near an aerodrome that is listed in the *Canada Flight Supplement* or the *Water Aerodrome Supplement* in a manner that could interfere with an aircraft operating in the established traffic pattern.
- **(2)** Subject to section 901.73, no pilot shall operate a remotely piloted aircraft at a distance of less than
 - **(a)** three nautical miles from the centre of an airport; and
 - **(b)** one nautical mile from the centre of a heliport.
- **(3)** No pilot shall operate a remotely piloted aircraft at a distance of less than three nautical miles from the centre of an aerodrome operated under the authority of the Minister of National Defence unless the operation is conducted in accordance with a special flight operations certificate — RPAS issued under section 903.03.

Records

- **901.48 (1)** Every owner of a remotely piloted aircraft system shall keep the following records:
 - **(a)** a record containing the names of the pilots and other crew members who are involved in each flight and, in respect of the system, the time of each flight or series of flights; and
 - **(b)** a record containing the particulars of any mandatory action and any other maintenance action, modification or repair performed on the system, including
 - **(i)** the names of the persons who performed them,
 - **(ii)** the dates they were undertaken,
 - **(iii)** in the case of a modification, the manufacturer, model and a description of the part or equipment installed to modify the system, and
 - **(iv)** if applicable, any instructions provided to complete the work.
- **(2)** Every owner of a remotely piloted aircraft system shall ensure that the records referred to in subsection (1) are made available to the Minister on request and are retained for a period of
 - **(a)** in the case of the records referred to in paragraph (1)(a), 12 months after the day on which they are created; and
 - **(b)** in the case of the records referred to in paragraph (1)(b), 24 months after the day on which they are created.
- **(3)** Every owner of a remotely piloted aircraft system who transfers ownership of the system to another person shall, at the time of transfer, also deliver to that person all of the records referred to in paragraph (1)(b).